

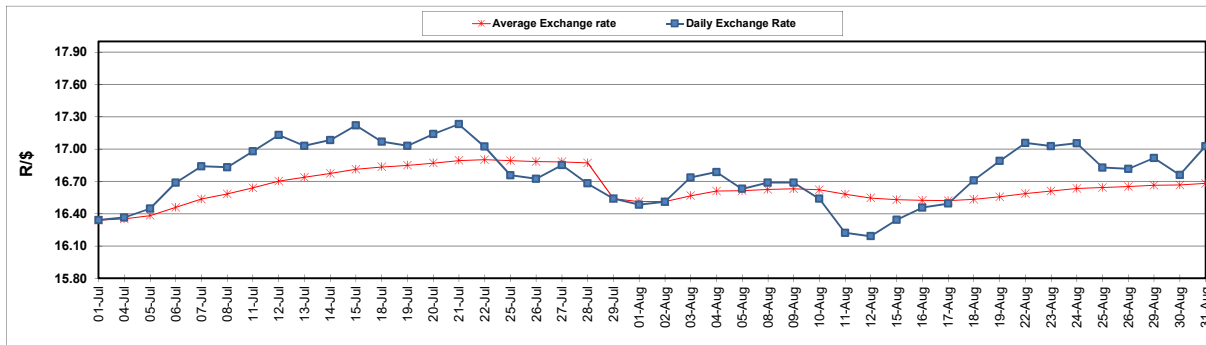
	PETROL 95 ULP	PETROL 93 ULP & LRP	DIESEL 0.05%	DIESEL 0.005%	ILL. PAR.
GAUTENG PUMP PRICE (SA c/l) AS FROM 03/08/2022	2,542.000	2,499.000	-	-	-
WHOLESALE PRICE (SA c/l) AS FROM 03/08/2022	-	-	2,452.440	2,461.840	1,842.288
SINGLE NATIONAL MAXIMUM RETAIL PRICE	-	-	-	-	2,431.000
BASIC FUEL PRICE - 31/08/2022 (SA c/l)	1,187.329	1,167.035	1,644.055	1,665.897	1,644.502
PRESS RELEASE CONTRIBUTION TO BFP 03/008/2022 - 31/08/2022 (SA c/l)	1,482.410	1,439.410	1,600.630	1,610.030	1,624.128
UNIT OVER/(UNDER) RECOVERY - 31/08/2022 (SA c/l)	295.081	272.375	(43.425)	(55.867)	(20.374)
AVERAGE BASIC FUEL PRICE 29/07/2022 - 31/08/2022	1,277.715	1,251.408	1,531.264	1,551.130	1,559.187
AVERAGE UNIT OVER/(UNDER) RECOVERY 29/07/2022 - 31/08/2022	230.571	213.877	89.741	79.650	82.941

ANALYSIS MOVEMENT OF AVERAGE OVER/(UNDER) RECOVERY

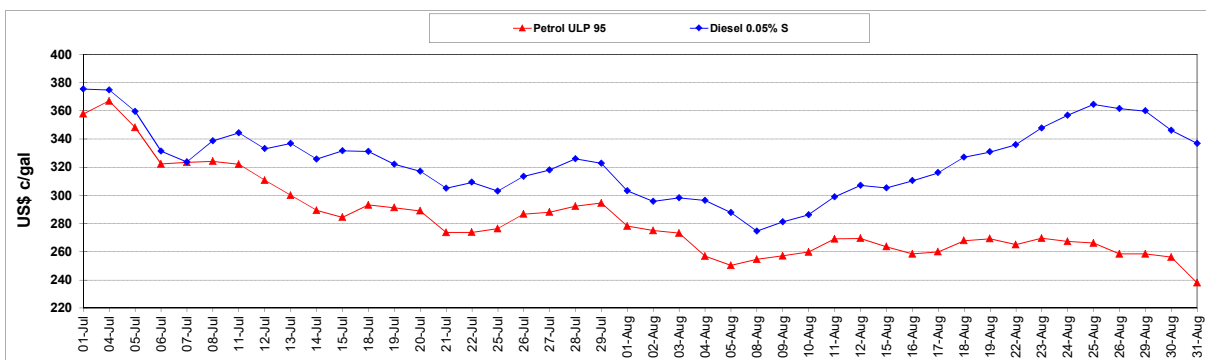
	PETROL 95	PETROL 93	DIESEL 0.05%	DIESEL 0.005%	ILL. PAR.
- MOVEMENT IN INTERNATIONAL PRODUCT PRICES	216.033	199.639	72.319	62.002	65.201
- MOVEMENT IN EXCHANGE RATE	14.537	14.238	17.422	17.648	17.740
AVERAGE UNIT OVER/(UNDER) RECOVERY 29/07/2022 - 31/08/2022	230.571	213.877	89.741	79.650	82.941

R/\$ EXCHANGE RATE - (R/\$17.0265 - 31/08/2022)

EXCHANGE RATE USED IN BASIC FUEL PRICE



INTERNATIONAL PRODUCT PRICES OF BASKET USED IN BASIC FUEL PRICE



BASIC FUEL PRICE IN SA CENTS PER LITRE

